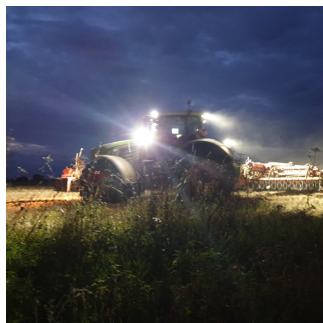
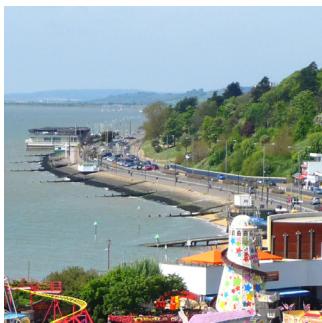


CRIME AGAINST BUSINESS STRATEGY

2020 - 2024



Contents

3	Introduction
4	What is Crime Against Business?
5	Our Vision and Our Objectives
6	Facts and Figures
8	Our Priorities
9	<i>Partnership</i>
10	<i>Prevention</i>
11	<i>Intelligence</i>
12	<i>Enforcement</i>
13	<i>Reassurance</i>
14	Governance, Delivery and Measures
15	Supporting Information

Introduction

We are privileged in Essex to have a dynamic and innovative business community. As well as helping create prosperity businesses are also an integral part of the vibrant local communities we have across our county. Businesses across Essex already work closely with Essex Police to reduce the risk of crime happening, to create safe environments and to provide vital intelligence, but we want to work even closer together to achieve so much more for the future.

Crime against businesses accounts for between 17% and 20% of all recorded crime in Essex with approximately 24,000 crimes recorded annually. The largest area of these is retail crime, predominately shoplifting, which accounts for 40% of all such offences. In addition, businesses also suffer from cyber crime, fraud, criminal damage and theft.

By working together we can cut crime against businesses by sharing information, strengthening local partnerships, introducing new prevention measures and improving enforcement measures. This Business Crime Strategy has been developed through a partnership between Essex Chambers of Commerce, the Police, Fire and Crime Commissioner for Essex and Essex Police. It has had the close input of the Business Crime Strategic Board, which is chaired by the Essex Chambers of Commerce, and with representatives from businesses across the county, so truly speaks on behalf of the Police and business communities alike.

Businesses across Southend, Essex and Thurrock are already playing their part in supporting our emergency services, supporting and enabling their staff to volunteer as Special Constables and investing thousands of pounds in security. Town Centre Teams, launched by Essex Police in 2019, are also making a difference in how businesses and the Police work together to combat crime against businesses. This strategy sets out how together we can make a difference for our businesses, for our communities and for the whole of Essex.



Roger Hirst

Police, Fire & Crime
Commissioner for Essex



Denise Rossiter

Chief Executive, Essex
Chambers of Commerce



BJ Harrington

Chief Constable,
Essex Police

What is crime against business?

Any criminal offence where a business, or person in the course of their employment, and because of that employment is the victim.

Our aim

To prevent crime against businesses.

Our objectives

- To increase reporting of business crime
- To increase the confidence of businesses
- To improve crime prevention and help businesses to help themselves
- To strengthen partnership working

Our vision for Essex

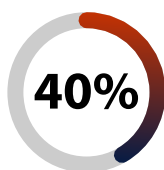
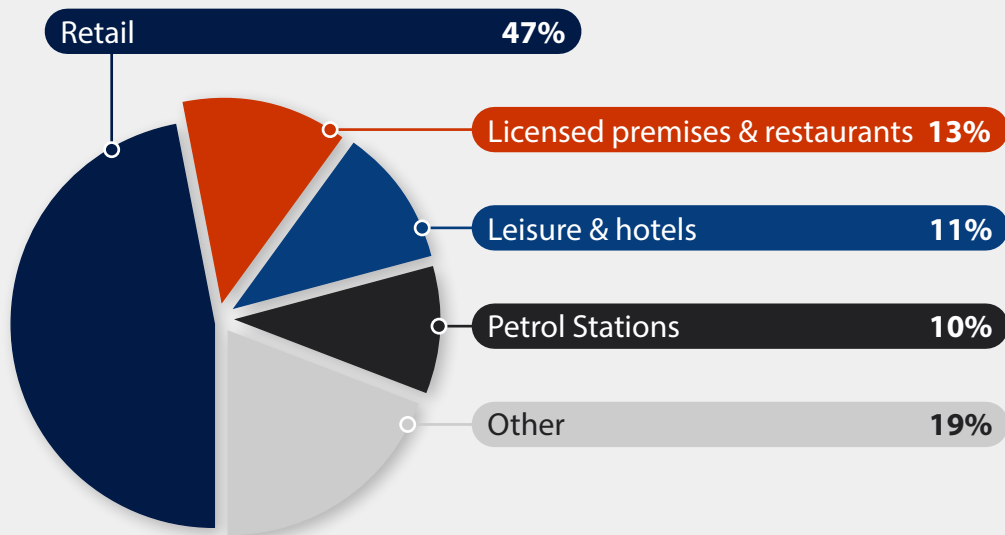
To create safe and secure communities where local businesses can thrive.

Facts and Figures

22,000
crimes take place **against**
businesses each year.

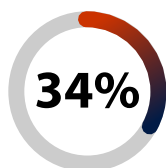


of all recorded crime in Essex occurred against or at businesses.

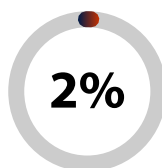


of recorded offences happen in retail clusters, with smaller centres disproportionately affected.

Businesses who don't invest in prevention are disproportionately affected by crime.



of crime against convenience stores is experienced by only



of stores

Crimes at businesses

We are seeing an increase in crimes happening at businesses which are *not against* businesses.

12,000
crimes **at** businesses.



increase from previous year.



of crime taking place at business premises but **not against** businesses were Public Order and Violence against the person

Our Priorities

Partnership

Prevention

Intelligence

Enforcement

Reassurance

Partnership



We will work closely with businesses to prevent crime, identifying and prioritising resources to tackle it through:

- Working with the Essex Business Crime Strategic Board to ensure businesses have a strong voice in policing priorities.
- Identifying and working with local business groups, Business Improvement Districts and other associations
- Providing funding for innovative, business-led crime prevention projects
- Growing the Employer Supported Policing Programme
- Working together to identify and create safer physical environments
- Recognising vulnerability in whatever form and working together to refer and signpost those affected to relevant agencies.

Prevention



We will work with businesses to ensure that they are aware of best practice and are empowered to reduce the risk of crime to their business through:

- Providing specialist training sessions on how to keep businesses and their employees safe
- Working with businesses to Design Out Crime
- Identifying and tackling emerging crime risks
- Identifying and sharing best practice prevention advice
- Raising awareness of services available through national and regional experts to help businesses better protect themselves against cyber crime and online fraud

Intelligence



We will work with businesses to encourage reporting of crime to gain an accurate picture of business crime in our county through:

- Sharing current crime patterns
- Building better local intelligence through increased reporting
- Identifying high volume crime areas or businesses and working to reduce their vulnerability
- Connecting businesses together to help the timely sharing of information

Enforcement



We will tackle those who commit crimes against businesses through:

- Cracking down on incidents of violence against businesses and their employees
- Promoting the effective use of dispersal orders, behaviour orders and civil remedy
- Promoting the use of restorative justice

Reassurance



We will give confidence to those who fear crime and support to businesses who have been the victim of crime through:

- Supporting creation of Business Watch groups to ensure businesses are well-informed and best able to support each other in preventing crime taking place
- Creating a Business Crime Team to provide specialist knowledge and support
- Promoting the use and benefits of Restorative Justice, for victims and perpetrators of Business Crime

Governance

The Strategy is owned by Essex Police, Essex Chambers of Commerce and the Police, Fire and Crime Commissioner for Essex, who will collectively monitor progress against the Strategy. Quarterly reports will be presented to the Essex Business Crime Strategic Board. This Board will also oversee the development of an action plan to support delivery of the strategy.

Delivery

Delivery of the Strategy will be led by the Essex Police Local Policing Support Unit (LPSU). LPSU will work in partnership with Local and Community Policing Teams across Essex, as well as Essex Chambers of Commerce, the Federation of Small Businesses and other business forums.

Measures

- Number of engaged businesses
- Confidence of the business community
 - Increased level of reporting
- Number of proactive problem solving operations

Supporting Information

Police & Crime Plan

www.essex.pfcc.police.uk/PoliceCrimePlan

This Plan highlights the Policing Priorities for Essex, and the shared objectives of Essex Police and the Police, Fire and Crime Commissioner for Essex, and is reviewed every four years.

Crime Prevention Strategy

www.essex.pfcc.police.uk/CrimePreventionStrategy

This Strategy details the strategic aims of Essex Police, with regard to Crime Prevention, including Night Time Economy Crime and Digital Crime and Fraud.

Rural Crime Strategy

www.essex.pfcc.police.uk/RuralCrimeStrategy

This Strategy was developed through a partnership between Essex Police, the Police, Fire and Crime Commissioner for Essex and Essex Rural Partnership. The scope of the strategy covers 'any crime committed in a rural location, or where the victim is specifically targeted because of their connection to, or involvement in, the rural community, economy, or area' and it includes references to rural businesses, particularly land-based industries.

Designing Out Crime

www.securedbydesign.com

This programme works with manufacturers, homeowners, builders, businesses and the general public to ensure that crime prevention is taken into account at the design phase. One national programme in the Designing out Crime field is Secured by Design. Essex Police also have a Designing out Crime team who with local stakeholders to promote crime prevention design features in Essex.



📍 Essex Police, Fire and Crime Commissioner
Kelvedon Park,
London Road,
Rivenhall,
Witham,
Essex CM8 3HB.

🌐 www.essex.pfcc.police.uk  [EssexPFCC](https://www.facebook.com/EssexPFCC)  [@EssexPFCC](https://twitter.com/EssexPFCC)

Essex
Chambers of Commerce

Better for business

📍 Essex Chambers of Commerce
34a Star Lane,
Great Wakering,
Essex SS3 0FF

🌐 www.essexchambers.co.uk  [EssexChambers](https://www.facebook.com/EssexChambers)  [@EssexChambers](https://twitter.com/EssexChambers)



📍 Essex Police Headquarters
Sandford Road,
Chelmsford,
Essex CM2 6DN

🌐 www.essex.police.uk  [EssexPoliceUK](https://www.facebook.com/EssexPoliceUK)  [@EssexPoliceUK](https://twitter.com/EssexPoliceUK)